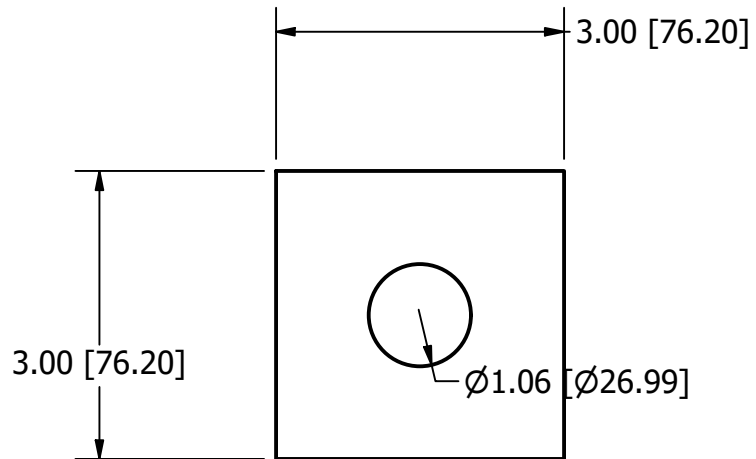
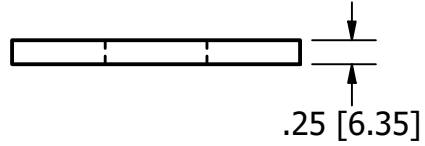
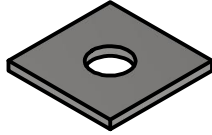


Units Inch[mm]

Scale 1/4

Drawn Shannon Kimes

Date 4/25/2026



Material

Packaging

Notes

Base Material: Steel, Carbon

Weight lbs[kgs]

Units

1. Weights approximation/theoretical.

Finish: Plain/None

Piece

0.64[0.29]

1 Piece

Coating: Oiled

Bag

50[22.7]

78 pcs

Pallet

2500[1134]

50 Bags

Ton[MT]

2,000[1,000]

3138[3451] pcs